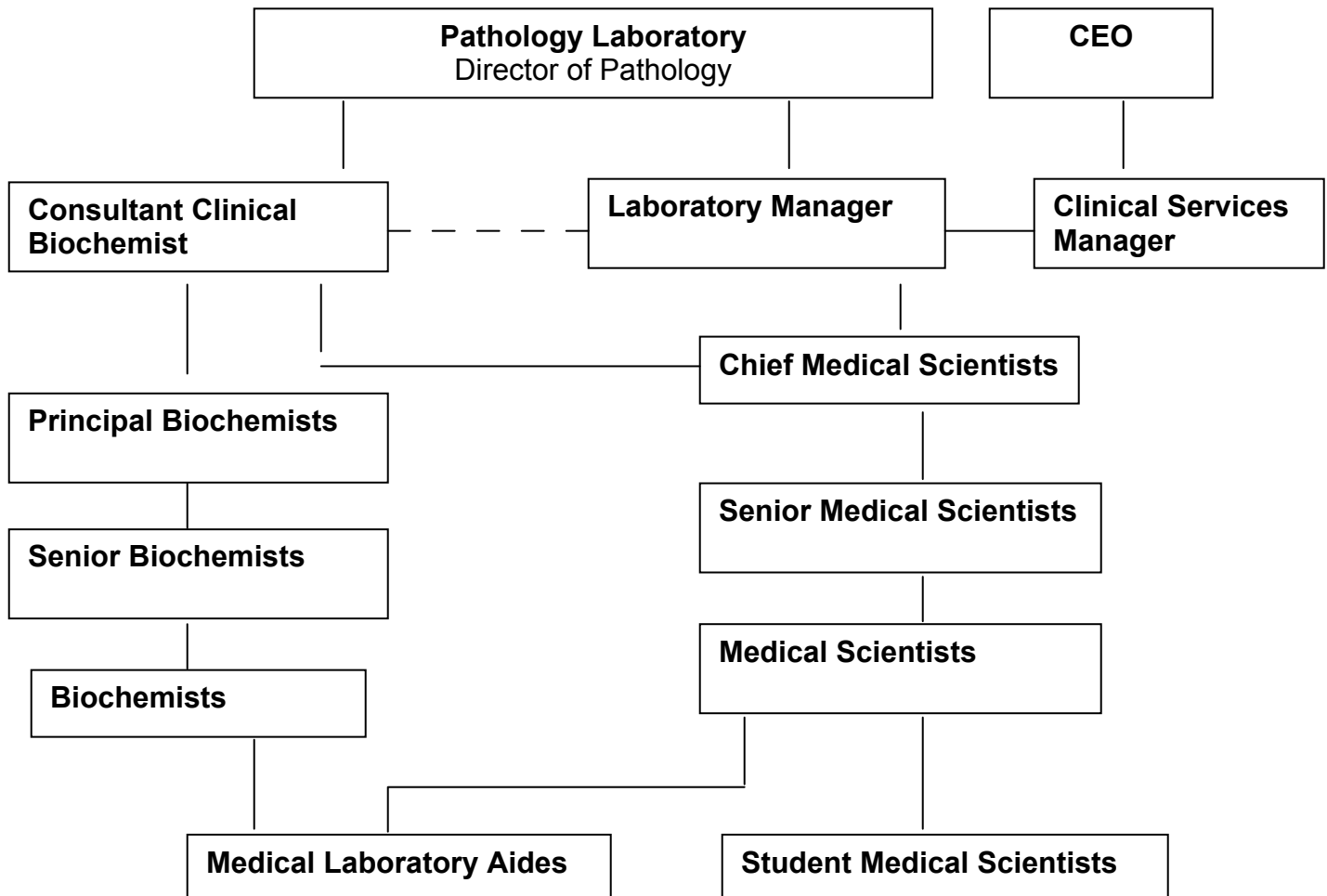


**JOB DESCRIPTION**

1 Job Title	2 Location	3 Record Filename
Senior Biochemist	Biochemistry	MF-BIO-JobDesSB4

**4 Organizational Chart**



**5 Purpose of the job**

**General:**

The post holder is responsible for providing a range of complex scientific work. She/he will direct and monitor the outcome of the service provided in the laboratory/specialist area on a day-to-day basis. The post-holder will be expected to work on a rotational basis in all sections of the laboratory and may be required to undertake secondments to more specialised areas.

*Management form*

Approved by: M Fitzgibbon  
 Active Date: 05/01/10

## **6 Main duties and responsibilities**

- To be responsible for supervision of the day-to-day operation of a designated area of the department.
- To be involved in equipment and method selection, performance monitoring and departmental quality control schemes and in the training, education and supervision of other staff members.
- To work in co-operation with other professional groups within the laboratory.
- To provide appropriate advice and result interpretation on tests within the laboratory to both medical and nursing staff.
- To be involved with the enhancement of the service provided by evaluating and implementing new methods, setting service standards and evaluating published developments and innovations.
- To play a role in troubleshooting in order to maintain high analytical quality in her/his assigned area.
- To liaise with staff from other departments within the hospital concerning service provision, including arrangement for near-patient testing.
- To participate in the clinical liaison rota
- To provide clinical scientist support e.g. specialist assays, as part of the research and development activities within the department. To participate in all relevant management operations and committees within the department.
- Be proactive in advancing all aspects of a quality accredited service.

### **6.1 Specific Duties:**

- To be responsible for the development of specialist services including molecular biology.
- Organise a teaching and education programme for the department of clinical biochemistry and diagnostic endocrinology.

## **7 General responsibilities**

- Undertake other duties commensurate with the post, as directed.
- Participate in the general clinical support rotas during the working day under the supervision of the Consultant Biochemist.
- Ensure that effective safety procedures are in place, are known and complied with, as outlined in the Pathology Safety Statement and Biochemistry Safety Procedures. Participate in local and national professional training and take part in the departmental arrangements for training/continual education of staff.
- Participate in local and national professional training and take part in the departmental arrangements for training/continual education of staff.

### **7.1 Out-of-Hours Service:**

Participation in the out-of-hours service is on a voluntary basis; but once committed to this service, the biochemist shall:

- Ensure by personal presence or by formal arrangement with other appropriate staff that all periods rostered are covered
- Undertake such out-of-hours duties commensurate with the post as directed
- Give a minimum of one month's notice of withdrawal from the service

## **8. Knowledge and Education**

- Acquiring specialist knowledge across a wide range of procedures and a sound understanding of professional, clinical and scientific principles through formal teaching and professional supervision to FRCPath level.
- Attend and participate at clinical and scientific meetings in order to achieve professional development.
- To undertake formal training, followed by approval in order to achieve registration as a Clinical Biochemist on the soon to be commenced register for Clinical Biochemists within the Health & Social Professions Council.

*Management form*

*Approved by: M Fitzgibbon  
Active Date: 05/01/10*

### 9. Job description and the Annual Joint review

Participate in annual joint review with laboratory management to consider:

- stated objectives and plans of the laboratory
- job description of the staff member
- personal objectives of the staff member
- training and development needs of the staff member

Job holder's signature		Date:	
Consultant Biochemist's signature		Date:	

*NOTE: the extent and speed of change in the delivery of health care is such that adaptability is essential in this position. The incumbent will be required to maintain and enhance their professional knowledge, skills and aptitudes necessary to respond to a changing situation. The job description must be regarded as an outline of the major areas of accountability at the present time, which will be reviewed and assessed on an on-going basis.*

**Management form**

Approved by: M Fitzgibbon  
Active Date: 05/01/10